

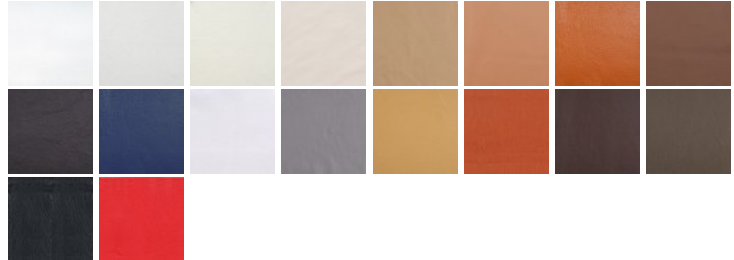
Mogensen Style: Model 2212 Style Loveseat

Inspired By: Borge Mogensen Model 2212 Loveseat



Item No.: MC-6107

Smooth Leather Choices:



Distressed Leather Choices:



Wood Finish Choices:



Product Category: [Loveseats](#)

Designer: [Borge Mogensen](#)

Product Group: [mogensen seating](#)

Modernism Style: [Scandinavian Modern](#)

DESCRIPTION

The Model 2212 Loveseat is part of the 2200 series as originally designed by Borge Mogensen in 1962, for use in his home in Gentofte, Denmark. As typical of the furniture designed by Mogensen, the Model 2212 has minimal styling and its simplicity and classic style have made this line among one of Mogensen's most popular designs.

Our Model 2212 inspired loveseat is truly a beautiful piece of furniture. Soft seat cushions, hand sanded wood legs, you will not find a more solid piece of furniture anywhere on the market. We use heavy-duty wood frame construction, solid wood legs and premium leather upholstery. The back and seat cushions are filled with feathers and side inserts are foam. We also have a matching chair and sofa.

Dimensions (inches):

Overall: 62w x 32d x 31.5h
Seat Interior: 50w x 20d
Seat Height: 17h
Arm Height: 24h
Weight: 150lbs

LEATHER CHOICES

Modern Classics Furniture offers two levels of premium Top-Grain Italian Leathers for this product (Smooth and Distressed). These leathers feature:

- Top-grain Italian leather from Grade A hides
- Semi aniline-dyed (standard) and 100% aniline-dyed (premium)
- Made at Italian tanneries and sent to our factory
- Have a UV and Moisture Guard built into the non-toxic vegetable dyes
- Are not split hides or bonded leather

We are happy to mail you a physical piece of leather so you can hold it in your hands.

Our **Smooth Premium leathers** are top-grain, aniline-dyed, have a soft feel to them and most of the hides natural grain patterns are retained. Our **Distressed Leathers** (denoted with the prefix L5) are also top-grain, aniline-dyed but have a distressed look to them. L5 leathers will show rubbings and have a more waxy feel. All our leathers are considered equally durable and are ideal for home or commercial use. To read more about leather, read our [A Guide to Understanding Upholstery Leather: A Primer](#).

Click on any of these images for an enlarged view.

Smooth Leathers (Premium -Top Grain)



Porcelain White L201	Alpine White L203	Beige White L211	Sandston L215	Driftwood Tan L219	Terra Brown L224	Golden Tan L227	Saddle Brown L231	Espresso Brown L235	Navy Blue L237	Nimbus Gray L238	Cloud Gray L239	Camel Tan L427
----------------------------	-------------------------	------------------------	------------------	--------------------------	------------------------	-----------------------	-------------------------	---------------------------	----------------------	------------------------	-----------------------	----------------------

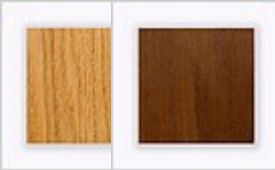
				
Tuscany Brown L431	Kona Brown L435	Taupe Grey L439	Scandinavian Black L443	Scandinavian Red L447

Distressed Leathers (Premium - Top Grain)



Harvest Tan L523	Caramel Tan L527	Clay Brown L531	Rich Brown L535	Olive Green L551
------------------------	------------------------	-----------------------	-----------------------	------------------------

WOOD CHOICES



Oak Natural Finish #W06	Dark Walnut Finish #W13
----------------------------------	----------------------------------